



Revised Building Regulations

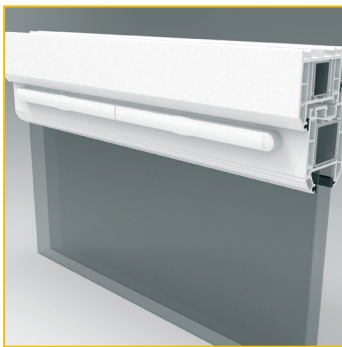
The revised Building Regulations require an increase in background ventilation to improve indoor air quality and with windows and doors being the main method for providing ventilation into a home, the requirements of trickle vents will thereby also increase. Airflow can improve the overall condition of the dwelling and wellbeing of the people living there, so it's only common sense that there are rules in place to ensure a well ventilated home.

Please note that the new regulations come into force on the 15th June 2022, which means any installations taking place on or after this date will need to comply with the new regulations.

Summary of Document F 2022

Replacement windows that contain background ventilation must include at least the equivalent ventilation.

- Where windows do not contain background ventilation, or the rate of ventilation is unknown, then the replacement windows must contain the following;
- Habitable rooms and kitchens – min. 8000mm² equivalent area (EA) or 10,000mm² equivalent area (EA) in single story Newbuild dwellings.
- Bathrooms (with or without a toilet) – min. 4000mm² equivalent area (EA).
- If the dwelling will have continuous mechanical extract ventilation, then a minimum of 4000mm² EA of background ventilation should be installed in each habitable room.



Supporting Your Compliance

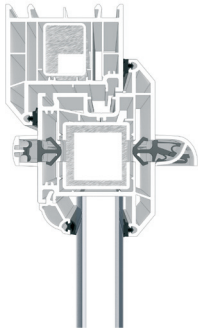
With compliance being mandatory, we've partnered with top glazing accessories manufacturer Glazpart to incorporate trickle vent solutions into our range that offer aesthetics that will prove attractive to buyers, whilst also satisfying the requirements of the Building Regulations. The Link Vent, which we found to be a seamless solution for our complete product range.



Trickle Vent Location

Product Type	Sash	Frame	Add-On
Eurocell Casements	Yes	Yes	50mm
Euorcell Flush Casement	x	Yes	50mm
Eurocell Doors	Yes	Yes	50mm
Eurocell Syncro Patio Door	x	x	50mm
Veka Casements	Yes	Yes	45mm
Veka Doors	Yes	Yes	45mm
Veka Inline Patios	x	Yes	45mm
Timeless Casements	Yes	Yes	45mm
Residence R7 Windows	Yes	Yes	x
Residence R9 Windows	Yes	Yes	x
Residence Doors	Yes	Yes	x
Sheerline Casements	Rebate*	Yes	45mm
Sheerline Doors	Yes	Yes	45mm
Sheerline Bifold Doors	x	x	45mm
Reynaers CP130 Lift and Slide	x	x	52mm

*Vent routed through frame and sash rebate leg.



Link Vent

Our Solution

The Glazpart Link Vent chosen by Lister Windows for our complete range of windows and doors uses aerodynamic calculations to deliver double the volume of airflow through a trickle vent with half the footprint of conventional types. Thus, compliance with Part F may be achieved using the same number of trickle vents that were required under the old legislation.

The Link Vent is not only discreet but also colour matched to our offering of PVCu and aluminium options, including a carefully selected range of finishes including woodgrains that blend in perfectly with our stock colourways.



Key Features

- Smooth and woodgrain finishes available
- Fixing clips pre-fitted for a hassle-free installation
- External canopy depth of only 25mm
- Simple, user friendly opening of the vent with a positive closing action
- The innovative “link” allows the closure plate to be positioned to reduce draughts with the benefit of directing air away from occupants

Technical Performance

- Watertightness Test to BS EN 13141-1: Resistant to water penetration using method 1 A meeting Class 9A requirement up to and at 600pa in BS EN 12208
- DB Rating: Airbourne sound insulation to BS EN ISO 10140-1 :2016 Annex E and BS EN ISO 10140-2 :2010 and single number calculated in accordance with BS EN ISO 717-1 :2013

EQA

- Options of 2500 EQA and 5000 EQA depending on window size.

