

A photograph of a factory interior. In the foreground, a man in a dark polo shirt is working on a metal frame. In the background, another worker is visible near a machine. The scene is filled with industrial equipment and materials.

LISTERS

SIMPLIFYING YOUR SUPPLY CHAIN.

Welcome to the **Trade Advantage
Welcome Pack** - where the right
partnership changes everything.

Content

Who We Are	1.
Meet The Team	2.
Our Mission and Core Values	6.
Our Commitment to Sustainability	8.
Our Story So Far	10.
Sheerline	12.
Residence Collection	14.
ORiGINAL Gallery44	16.
BRiTDOR Gallery44	18.
VEKA OMNIA	20.
VEKA Halo	22.
Eurocell	24.
Trade Support	26.
Stoke Contact Details	28.
Essex Contact Details	30.
Accreditations & Certifications	32.
Customer Reviews	34.
Stay Connected	35.

Who We Are

Over the past year, Listers Windows & Doors has been on an incredible journey of growth, innovation, and investment - not only in machinery, but also in our people, our processes, and how we work together.

At Listers, we understand what drives performance on large-scale projects: **reliability, speed, precision, and consistency** at every stage. We don't just supply - we partner with businesses that expect more.

Our strength lies in delivering trade-ready solutions that help you stay ahead - no delays, no compromise, just dependable service backed by decades of industry knowledge. You now have access to one of the UK's most capable and trusted supply networks in the fenestration industry.



Steve Gardiner
Managing Director

Why Listers?

- Fast, reliable lead times - built for trade demand and scaled delivery
- High-performance product range - from energy-efficient PVC-U to premium aluminium and composite doors
- Fully prepped, ready-to-fit systems - to save time and reduce on-site errors
- Dedicated account management - expert support when and where it's needed
- National reach, local support - with a logistics network that delivers where you work
- Manufacturing excellence - consistent quality, built to spec, every time
- ESG-aligned thinking - sustainability and responsibility as standard

ALL UNDER ONE ROOF - TRADE MADE SIMPLE.

We're here to help you deliver - on time, on spec, and on budget.

The Listers Team

We believe we have the best team in the industry. People are at the heart of the business and we are proud that many of our colleagues have worked in the business for over 10 years, and several for over 20 years. We offer on site training in the factory and have apprentices in our offices to develop new talent.

Key Faces



Steve Gardiner
Group Managing Director



Caroline Sharpe
Group Finance Director



Rob Waller
Sales Director, Essex



Paul Tranter
Sales Director, Stoke



Stuart Pickersgill
Group Manufacturing Director



Carl Darby
Director of IT



Bradley Foster
Group Head of Business Improvements



Nika Jaszczyszyn
Group Head of HR



Karolina Stasiak
Group Marketing Manager



Molly Newton
Finance Manager



Steven Talbot
Group Procurement Manager



Our Stoke Team



Andrew Todd
General Manager,
Stoke



Jayne Howe
Customer Services
& Office Supervisor



Stephen Hancock
Quality Assurance
Manager



Andy Foulkes
Technical Manager



Tommy Taylor
Process Engineer



Sean Moss
PVC Production
Manager



Ryan Parsons
PVC Production
Manager



Lee Copestick
Aluminium & Specials
Production Manager



Dan Quinn
Factory Manager
Dispatch, Goods In & QC



Jason Williams
Transport Manager



Dale Watson
Regional Sales
Representative



Our Essex Team



Steve Greenaway
Operations Manager
(Unit 21/23)



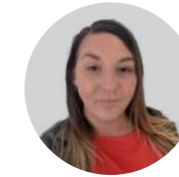
Barry Maslem
Factory Manager
(Unit 6)



George Nyambuya
Group QHSE Manager



Sam Cockerton
Continuous
Improvement Manager



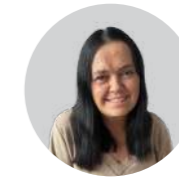
Kayleigh Jacobs
Business Development
Manager



Jason Humphris
Service & Technical
Support Engineer



Hannah Foster
Customer Services
Team Leader



Laura Houghton
Progress Coordinator



Paul McCarthy
Order Processing
Supervisor



Everything we do at LISTERS is built around one thing, supporting the trade.

We know what installers need from a supplier: a solid product, delivered on time, backed by a team that's easy to deal with. That's what we aim to deliver, every time. Whether you're fitting one door or running a multi-plot site, you'll get the same care and attention to detail.

But we don't just supply. We help you sell, quote quicker, and win more work, with access to brochures, digital tools, and expert advice when you need it.

L Our Promise

*We simplify supply. We promise to deliver more than just high-quality windows and doors. We deliver a reliable partnership and a **commitment to sustainability**. Built on our company values, we are **trusted by trade**. We support every customer and installer with integrity, professionalism, and consistent excellence.*

We're here to help you get the job done right and help your business grow with us.



Customer Focus
Put the customer first with excellent service



Clear Communication
Be open and honest



Respect
Treat everyone with professionalism



Teamwork
Support each other and succeed together



Accountability
Own your work and fix problems



Growth Mindset
Always look to improve



Quality
Strive for the highest standards



Integrity
Build trust through honesty



Knowledge Sharing
Help each other grow



Positive Culture
Faster motivation and support

Our Commitment to Sustainability

At Lister's Windows and Doors, sustainability is at the heart of how we work. We're proud to hold three prestigious BSI Certificates of Registration that demonstrate our commitment to quality, the environment, and energy efficiency:

- ENMS 74420 (ISO 50001 – Energy Management): Helping us use energy more efficiently, reduce emissions, and lower our carbon footprint.
- EMS 714765 (ISO 14001 – Environmental Management): Ensuring we actively manage and reduce our impact on the environment through responsible use of resources and continuous improvement.
- FM 327228 (ISO 9001 – Quality Management): Guaranteeing consistent quality in everything we do, reducing waste and inefficiency while delivering products our customers can trust.
- EMS 763233 (ISO 14001 – Environmental Management): Applying the same environmental controls across more of our operations, helping us cut waste and keep improving how we use resources.
- FS 757270 (ISO 9001 – Quality Management): Keeping our processes consistent and checked across the business, reducing errors and rework while delivering products our customers can trust.

Smarter Energy Use with ESOS

As part of our ongoing sustainability journey, we've completed ESOS (Energy Savings Opportunity Scheme) projects focused on monitoring Significant Energy Users (SEUs). By using rayleighconnect™, we collect and analyse energy data from machines and equipment to spot where improvements can be made.

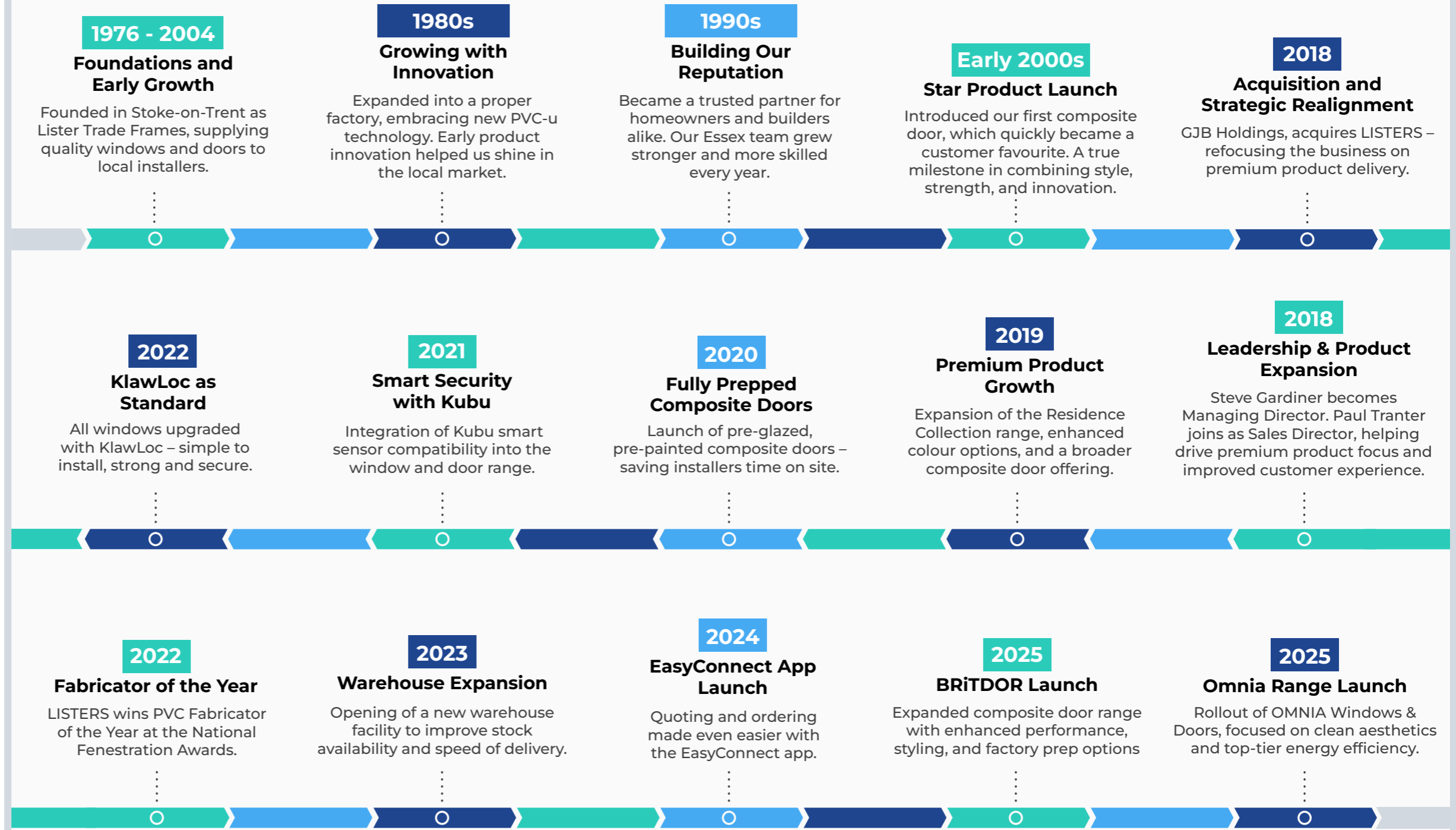
This approach allows us to:

- Reduce energy waste through better machine maintenance.
- Simplify monitoring with easy-to-use gateways and meters.
- Improve reliability by tracking system health and performance.
- Store and access data securely for smarter decision-making.



Our Story So Far

Since 1976, LISTERS has grown from a local fabricator into one of the UK's leading trade suppliers. Along the way, we've expanded our product range, built new facilities, and invested in the tools and technology that help our customers work better. Here are some of the key moments that shaped who we are today.





Sheerline

Sheerline brings something different to the aluminium window and door market, systems designed from the ground up for the trade. Made in the UK, Sheerline products combine clean aesthetics with smart thermal performance and installer-friendly detailing.



Thermally Efficient
Highlights Thermavic® thermal technology



Low Maintenance
Powder-coated aluminium, won't warp or rot



Fully Recyclable
Aluminium sustainability benefits

Windows

[Sheerline Classic Windows](#)

A flush sash aluminium window that blends traditional styling with modern performance. Built with patented corner joints and Thermavic® multi-chamber thermal technology for better energy ratings and easier installation. Ideal for heritage or modern properties.

[Sheerline Prestige Windows](#)

This is the premium option in the Sheerline range – offering even better thermal performance and deeper sash options. With U-values as low as 0.9 W/m²K and Secured by Design accreditation, the Prestige window is ideal for higher-spec domestic and light commercial projects.

Doors & More

[Sheerline Prestige Bi-Fold Doors](#)

Slim, strong, and secure. This easy-glide bi-fold system is designed for modern living, with excellent thermal performance and clean sightlines.

[Sheerline Heritage Doors](#)

A classic-style aluminium door that suits heritage properties or renovation projects. Combines period aesthetics with modern security and thermal performance.

[Sheerline Prestige French Doors](#)

A secure, energy-efficient aluminium French door that pairs perfectly with Sheerline windows. Ideal for both traditional and contemporary homes.

[Sheerline S1 Roof Lanterns](#)

A high-performance aluminium roof lantern designed to maximise light and thermal efficiency. Quick to fit, with no visible fixings and clean internal lines.

[Sheerline Prestige Lift & Slide Doors](#)

Smooth sliding operation with minimal frame and maximum glass. Designed for large openings, with excellent insulation and a premium finish.





THE
R
COLLECTION

Residence Collection

The Residence Collection is all about delivering the timber look, without the hassle. These premium PVC-U flush systems are designed to replicate traditional wooden windows and doors, perfect for period homes, listed buildings, or customers who want something with more character.



Energy Efficient
Suitable for low U-values and A+ ratings



Timber Look
For authentic flush timber-style finish



Colour Choice
Wide range of foils and dual colours

Windows

[Residence 7 \(R7\) Windows](#)

Flush inside and out, the R7 window has a clean, symmetrical appearance. Built with 7 chambers for thermal performance and designed for simple installation. Great for both new builds and traditional refurb projects.

Doors

[Residence 7 \(R7\) Doors](#)

Flush sash door with timber-style looks, built to match the R7 window system. Strong, secure, and low maintenance, ideal for rear and side doors.

[Residence 9 \(R9\) Windows](#)

Inspired by 19th-century timber frames, the R9 window is ideal for conservation areas and high-spec renovations. Mechanical joint options, decorative detailing, and timber-effect foils give a truly authentic finish.

[Residence 9 \(R9\) Doors](#)

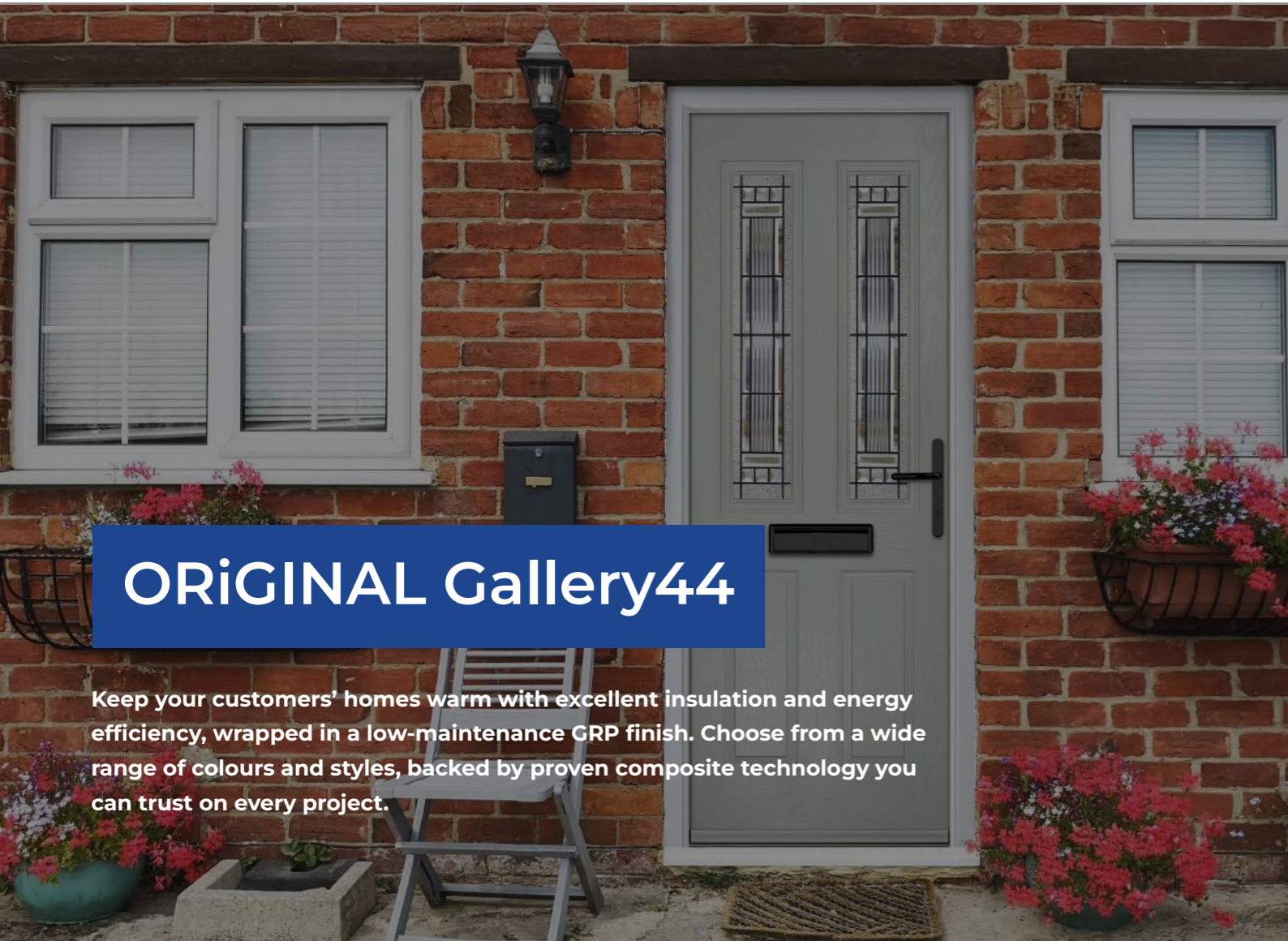
A period-style flush door that pairs with R9 windows. Ideal for traditional homes or heritage locations where visual authenticity matters.

THE
RESIDENCE
COLLECTION

**MADE IN
BRITAIN**

Secured by Design
SBD
Police Preferred Specification





ORiGINAL Gallery44

Keep your customers' homes warm with excellent insulation and energy efficiency, wrapped in a low-maintenance GRP finish. Choose from a wide range of colours and styles, backed by proven composite technology you can trust on every project.

 [Download ORiGINAL Gallery44 Brochure](#)

Composite Doors

ORiGINAL - Gallery 44

Each ORiGINAL Gallery 44 door features a high-density foam core for improved thermal efficiency and a GRP outer skin for superior weather resistance. This makes them lightweight, easy to handle, and simple to install, while maintaining a premium look and feel.

With a wide choice of designs, colours, and glazing options, the ORiGINAL Gallery 44 range offers something to suit every property. Doors can also be supplied fully prepped - including glazing, hardware, and paint - to help installers save time and deliver a consistent, high-quality finish.

FOAM FILLED CORE



Core Construction

PU foam-filled core for excellent insulation and energy efficiency

Outer finish

Reinforced GRP skins, smooth or wood-grain finishes

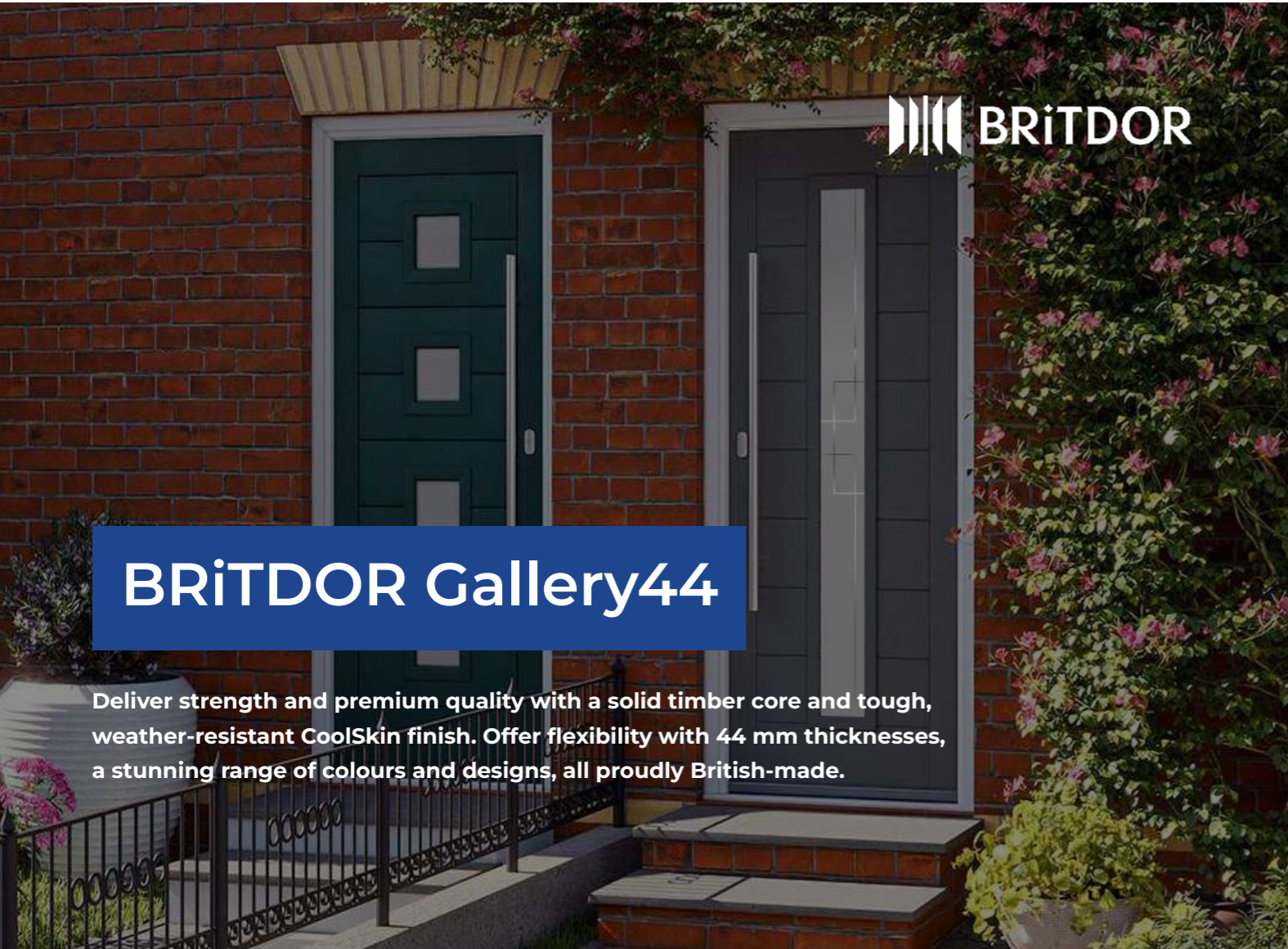
Thickness

Standard 44 mm slab

Design variety & colour

Wide range: traditional, contemporary, designer slabs, multiple colours and glazing options.






BRiTDOR Gallery44

Deliver strength and premium quality with a solid timber core and tough, weather-resistant CoolSkin finish. Offer flexibility with 44 mm thicknesses, a stunning range of colours and designs, all proudly British-made.

 [Download BRiTDOR Gallery44 Brochure](#)

Composite Doors

 [BRiTDOR - Gallery44](#)
Each BRiTDOR door features a solid timber core for strength and a thermoplastic outer skin for weather protection. This ensures no warping, cracking, or fading, keeping the door looking good with minimal maintenance.

SOLID CORE



Core Construction
Solid timber for a traditional, strong feel.

Outer finish
Coolskin thermoplastic layer with wood-grain texture and scratch resistance.

Thickness
44 mm.

Design variety & colour
Broad range: traditional + exclusive new slabs, 17 colours/stains, 25 decorative glazing designs.

BRiTDOR doors are available in a wide range of colours and styles, with both modern and traditional options. Every door can be supplied fully prepped - including glazing, paint, and hardware - helping you save time on site and deliver a professional finish.






OMNIA
by VEKA

OMNIA

OMNIA is the award-winning, double-rebated, double-flush PVCu system from VEKA HALO, designed to help installers stand out with premium performance, easy installation, and high-end aesthetics.

-  High Thermal Efficiency
-  Next-level Smart Security
-  Consistent sightlines with windows
-  Ideal for full-property installs

OMNIA Finishes


 OMNIA is available in two finish options:


- **Standard Range** – popular colourways stocked and ready to go
- **FEINSTRUKTUR Selection** – matt textured foils that replicate aluminium, with strong durability and low thermal absorption. Stocked in Anthracite Grey, with seven more colours available to order.

Key Features & Benefits

- **Double-rebated, double-flush design**
clean lines inside and out
- **70mm frame depth**
suitable for both retrofit and new build
- **U-values as low as 0.79 W/m²K***
fully Future Homes Standard ready
- **PAS 24 certified**
security built in, with optional Secured by Design
- **Timberweld® option**
for a traditional butt-joint appearance
- **Compatible with Kubu smart sensors**
- **10-year guarantee**
peace of mind for installers and homeowners

OMNIA Doors

 OMNIA DOORS are the perfect match to the window system, secure, efficient, and flush in appearance. Supplied as Entrance Doors or French Doors, they deliver a unified look across any property, complete with colour-matched foils and a choice of traditional hardware options such as Monkey Tail or Pear Drop handles.

 **NEW FINISH** *FEINSTRUKTUR Anthracite available at Standard Colour pricing – speak to your Sales Manager*





VEKA Halo

VEKA Halo is a proven PVC-U system that offers installers real flexibility and reliability on site. With chamfered and sculptured profile options, the range delivers secure, energy-efficient windows and doors that are simple to fit and ideal for both replacement and new build projects.



A+ Energy Rating



Installer Friendly



Recycled PVC-U



PAS 24 & Document Q Ready

Windows

[VEKA Halo System 10 Windows](#)

The System 10 window is a straightforward, chamfered-frame design that suits both domestic and commercial installs. Built with a multi-chambered profile for thermal performance, it achieves A+ ratings with double or triple glazing. Easy to glaze on-site and designed for slim sightlines, this system is ideal for fast-paced work where consistency and compatibility matter.

Doors

[VEKA Halo System 10 Residential Doors](#)

A fully compatible residential door solution that pairs with System 10 windows. Designed with a chamfered profile, multi-point locking, and steel reinforcement for added strength, this door is suitable for front and back entrances. Optional low thresholds and part M compliance make it suitable for accessible housing applications too.

[VEKA Halo Rustique Windows](#)

Rustique offers a sculptured sash profile with soft, rounded detailing. It's designed to deliver a more decorative look, often preferred for traditional homes or customers wanting something closer to timber. Multi-chambered for thermal efficiency and suitable for PAS 24 compliance, Rustique combines strong looks with strong performance.





Eurocell

Eurocell delivers reliable PVC-U systems that installers trust. With simple fitting, matching windows and doors, and solid thermal performance across the range, Eurocell is built for trade projects, from private homes to multi-plot sites.

-  Energy Efficient
-  Installer Friendly
-  Recycled PVC-U
-  Colour Matching

Windows

Standard Windows
 A reliable, multi-chambered PVC-U window system suited for a wide range of properties. Easy to install, secure and good energy-efficient performance.

Logik S Windows
 The Logik S flush window system replicates the look of traditional timber frames. Designed for fast, accurate installation, and ideal for heritage-style homes or modern upgrades.

Modus Windows
 A modern PVC-U flush sash system with slim sightlines and triple-seal frame for enhanced insulation. Modus offers the clean look of aluminium with the ease and thermal efficiency of PVC-U.

Doors & Roofs

French & Residential Doors
 Outward-opening French and residential doors that match the Modus and Logik systems. A secure, thermally efficient choice for rear doors, extensions, or garden access.

Syncro Patio Doors
 The Logik S flush window system Smooth-sliding PVC-U patio doors with slim sightlines, strong energy performance, and colour-match options. A dependable choice for both replacements and new builds.

Conservatory Roof
 A classic glazed roof system with options for Edwardian, Victorian, gable-end, or lean-to designs. Available with polycarbonate or glass panels and matching wall frames.

Equinox Tiled Roof
 A warm, solid tiled roof system for retrofitting conservatories or building new extensions. Offers fast installation and U-values as low as 0.15 W/m²K.



Customer Service Support

No stress. We're on it.

Dedicated trade customer support team offering expert advice, seamless ordering, and straightforward solutions to help you work faster and grow your business.

We don't just supply products, we support you with tools, training, and systems that help save time and win more work. Whether it's quoting, fitting, or selling, our support is always here.

Customer-Friendly Tools That Simplify Your Experience

Easy Connect

☞ Quoting Made Simple

Quote in minutes with Easy Connect App – our online platform designed to help you manage jobs quickly and clearly. Get live pricing, product options.

- **Instant, Accurate Quotes** – configure products and get live pricing in seconds.
- **Professional, Branded Output** – send PDF or printed quotes with your logo and details.
- **Full Product Range** – all Lister windows and doors included, no limitations
- **Error-Free & Efficient** – built-in checks reduce mistakes and save admin time.
- **Flexible & Mobile** – use on laptops or tablets, online or offline.
- **Team-Friendly** – shared access for sales, surveyors, and office staff.

Installation & Maintenance Guides

☞ Access our library of step-by-step guides and installer training videos. Perfect for new team members or as a quick reference on site.

- **Downloadable fitting guides**
- **Video training resources**
- **Product-specific instructions**

NEW! Design and order windows and doors from the comfort of your home

With a Lister's trade account, you can use our window and door designer program to plan, customise, and place orders directly - all from your own computer. This isn't a quotation system; it's a full ordering tool that lets you manage your projects easily, on your schedule, morning, evening, or night.

Learn more by emailing: info@listerwindows.co.uk

Trade Marketing Service

☞ Download brochure here



FOCUS by Listers

Everything you need, in one place - no downloads, no logins. FOCUS gives you instant access to brochures, installation guides, care info, and more. Whether you're quoting or on-site, it's built to save you time.



Find it here

For more info go to: www.listerwindows.co.uk/focus-from-listers/

STOKE OFFICE - Quick Contact Guide

Phone - 01782 391900*

Switch Board: 1* - Trade Counter
2* - Trade Counter Sales
3* - Customer Service

4* - Accounts
5* - Dispatch
6* - Purchasing

7* - Aluminium
8* - Quotations
9* - BIG Trade Counter Branches



Customer Service Support

cs.stoke@listerwindows.co.uk



Jayne Howe
Customer Service & Office Supervisor
cs.stoke@listerwindows.co.uk

Order & Quote Processing

Orders: orders.stoke@listerwindows.co.uk

Quotes: quotes.stoke@listerwindows.co.uk

Technical Support



Andy Foulkes
Technical Manager
cs.stoke@listerwindows.co.uk



Stephen Hancock
Quality Assurance Manager
cs.stoke@listerwindows.co.uk

Planning Queries

planning@listerwindows.co.uk

Emma Bailey
Order Processor
orders.stoke@listerwindows.co.uk
Call: 01782 391900 ext 2051

Transport Services

transport.stoke@listerwindows.co.uk

Call: 01782 391926

Chris Shaw / Richard Longshaw

Sales Team



Paul Tranter
Sales Director, Stoke
paul.tranter@listerwindows.co.uk
Call: 07867 240 535



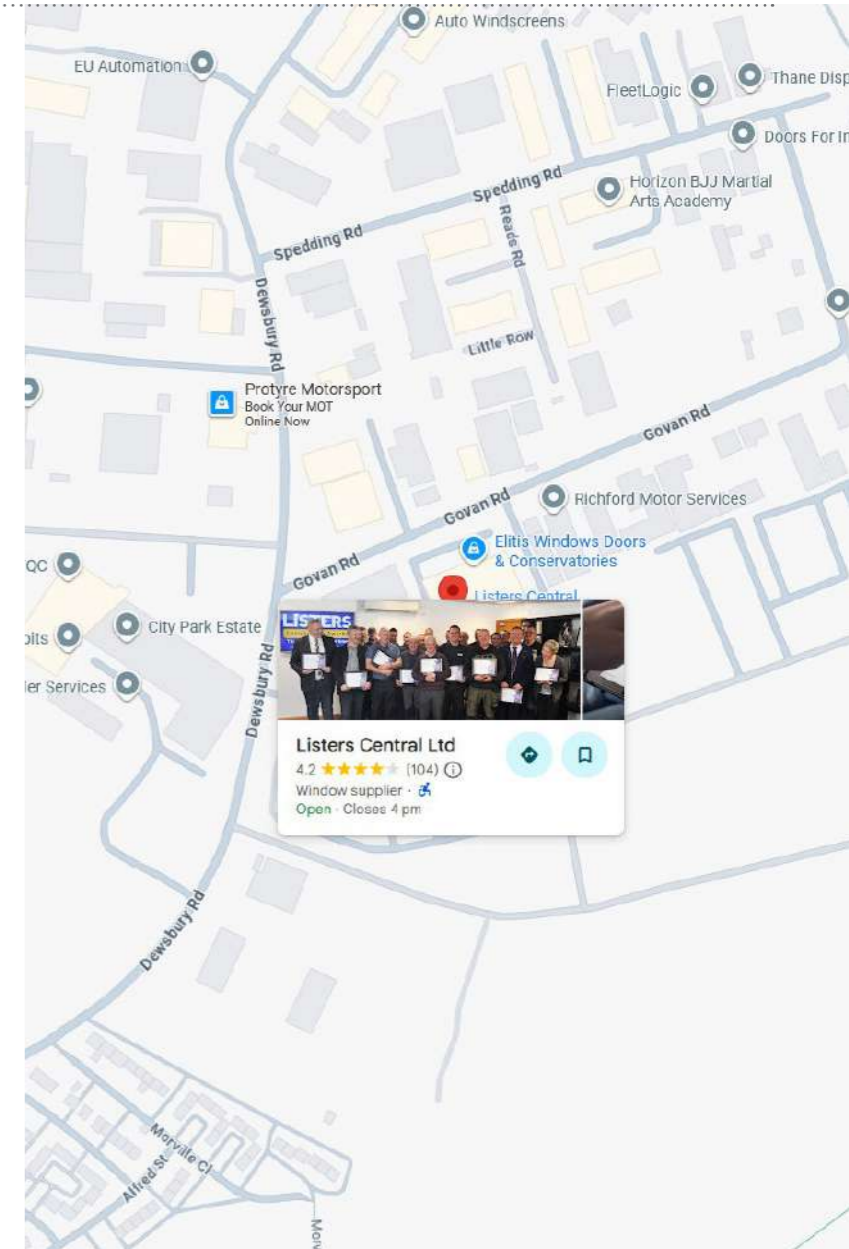
Dale Watson
Regional Sales Representative
dale.watson@listerwindows.co.uk
Call: 07494093436

Accounts / Credit Control



Molly Newton
Finance Manager
molly.newton@listerwindows.co.uk

Lisa Walton
lisa.walton@listerwindows.co.uk



ESSEX OFFICE - Quick Contact Guide

Phone - 01268 775566*

Switch Board: 1* - Customer Services 4* - Accounts 7* - Aluminium
2* - Conservatories 5* - Supply Chain Purchasing 8* - GJB New Build
3* - Order Scheduling 6* - Group Quotations 9* - BIG Trade Counter Branches



Customer Service Support

cs.essex@listerwindows.co.uk



Sam Cockerton
Continuous Improvement Manager
sam.cockerton@listerwindows.co.uk



Hannah Foster
Customer Service Team Leader
cs.essex@listerwindows.co.uk

Order & Quote Processing

Orders: orders.essex@listerwindows.co.uk

Quotes: quotes.essex@listerwindows.co.uk

Teegan Ley
Order Processor

teegan.ley@listerwindows.co.uk

Call: 01268 775566 (Opt 2)

Richard Lotter
Technical

richard.lotter@listerwindows.co.uk

Sales Team



Robert Waller
Sales Director
rob.waller@listerwindows.co.uk
Call 07738 949634



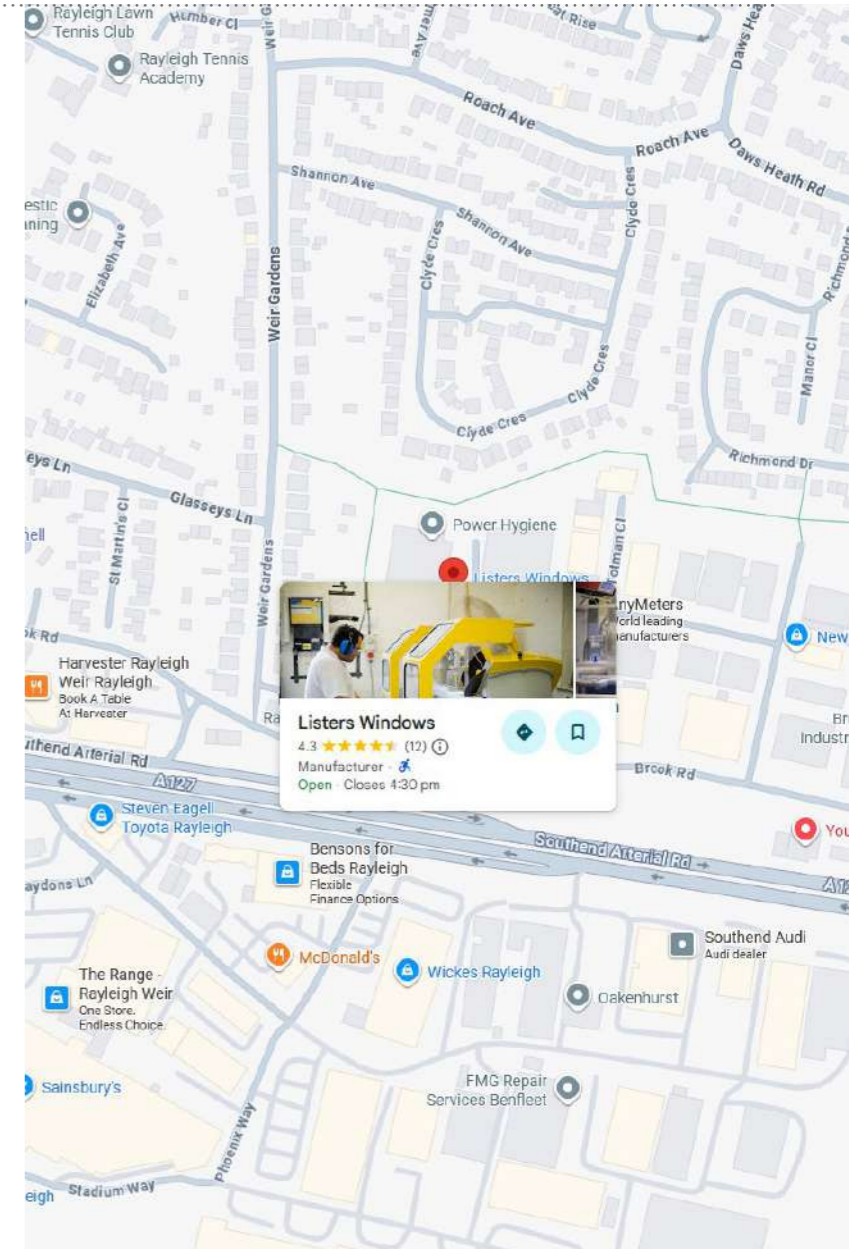
Kayleigh Jacobs
Business Development Manager
kayleigh.jacobs@listerwindows.co.uk
Phone: 07979675044

Accounts / Credit Control



Molly Newton
Finance Manager
molly.newton@listerwindows.co.uk

Catherine Lidbury
catherine.lidbury@listerwindows.co.uk



Accreditations & Certifications

Every product you order from LISTERS is backed by quality, tested performance, and industry-recognised standards. Our accreditations aren't just badges, they give you and your customers confidence that what you're fitting is made to last, meets regulations, and performs on site.

Whether you're quoting for a homeowner, working on a site install, or passing building control, you can trust that our windows and doors meet the required spec.

- Meets new build and replacement building regulations
- Helps homeowners feel secure and confident
- Shows quality, security, and energy performance
- Speeds up paperwork on regulated jobs
- Backed by industry authorities and testing



BSI Kitemark™

Industry-recognised certification for quality and performance. Covers manufacturing, materials, and consistency across every product we make.



PAS 24:2022

Tested security for doors and windows. Proves that products meet the current standards for strength and attack resistance.



ISO 9001, ISO 14001 & ISO 50001

Certified for quality management and environmental responsibility. Shows that LISTERS meets international standards in both process and sustainability.



Secured by Design (SBD)

Police-preferred security standard. Doors and windows with SBD are independently tested to PAS24:2022.



Document Q Compliant

Our doors and windows meet the legal requirements for new build security under Part Q of Building Regulations in England.



BFRC Energy Ratings

All windows and doors can be rated using the British Fenestration Rating Council system – giving clear guidance on energy performance and compliance with Part L.

Customer Reviews

Installers and customers choose LISTERS because we deliver quality products, fast lead times, and a support team that understands the trade.

★★★★★
 “Customer service is excellent, I’ve been a customer for over 20 years.”
 Deborah Wilson

Here’s what some of our customers have to say:

★★★★★

“I’ve used Listers for 25 years – great service, great products, and a cracking team on the trade counter.”

Roofwise Roofing Specialists

★★★★★

“Every house I’ve worked on has had Listers products. Excellent quality, competitive prices, and the best customer service.”

Jack Ridge

★★★★★

“Top quality windows and doors - they still look perfect 15 years later. The mechanisms all still work like new.”

Roy Johnson

★★★★★

“The showroom, the service, and the staff were all second to none.”

Blue Carthalian

★★★★★

“From quote to install - professional, reliable, and easy to deal with.”

Darren Gibbons

★★★★★

“I use Listers for all my materials. Great service from the lads on the trade counter - always helpful.”

Paul Jones

★★★★★

“We chose black external windows with white inside, perfect look and left no mess. The design is beautiful..”

Deborah Ridge

★★★★★

“Great advice and service. Always helpful and knowledgeable, thanks again Simon.”

Paul Dawson

★★★★★

“Residence 9 windows helped us get planning approval next to a listed building. The result looks like timber with no maintenance.”

Owen Francis

LISTERS Case Studies

See how we support our customers with everything from premium residential projects to high-volume housing.



[Martindale Windows' Project with Listers using Residence Collection](#)



[Feature Windows, Stoke-on-Trent – A Testament to Listers' Quality and Innovation](#)

Marketing Support

Staying Connected Matters More Than Ever

In today's fast-moving market, staying connected is more than just convenience, it's an essential part of how we do business.

Whether it's product launches, fitting updates, lead times, digital tools, installation resources, or simply staying aligned on what's coming next - connection is what keeps us all moving forward together. I understand that in the trade, time is always in short supply. But being connected through platforms like LinkedIn isn't about constant messaging, it's about having a direct line to timely, relevant information when you need it.

Through LinkedIn, we share:

- Early previews of new products and services
- Lead time updates and supply chain insights
- Practical tools and fitting advice
- Digital brochures
- Industry news and behind-the-scenes content

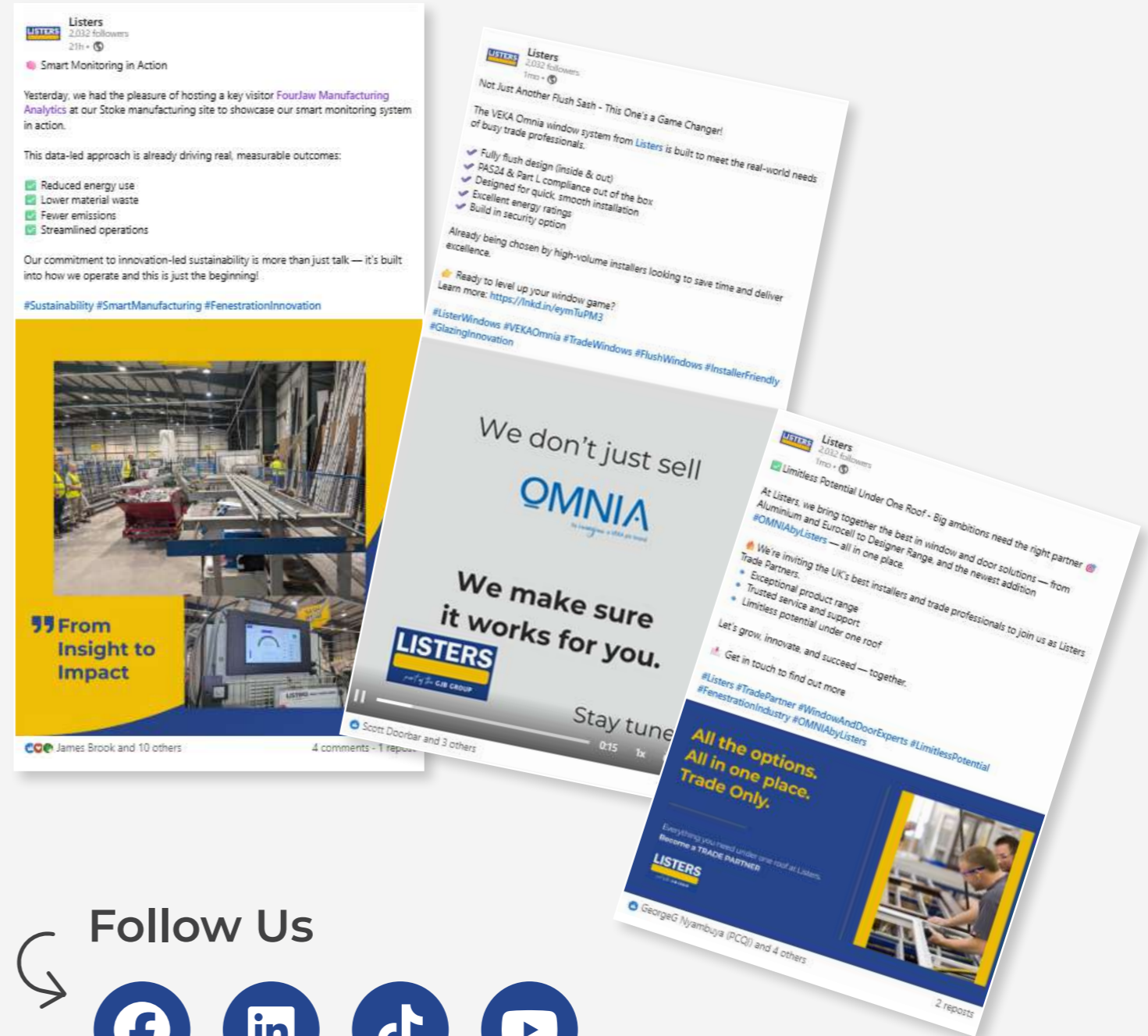
Most importantly, it's where you can see how others in the trade are adapting, innovating, and staying ahead, and where we can listen, learn, and grow together. I'd genuinely welcome the opportunity to connect with every one of you. Just click the LinkedIn icon in this pack, send me a request, and I'll be glad to accept.

Let's stay connected - and move forward together.

Warm regards,
Karolina Stasiak
Marketing Group Manager



Karolina Stasiak, Group Marketing Manager



**We are truly humbled to be working with you
as a valued client and business partner.**

**Whether we have been working together
for one year or forty, we greatly appreciate your trust
and we are delighted to achieve our goals together.**

LISTERS
